



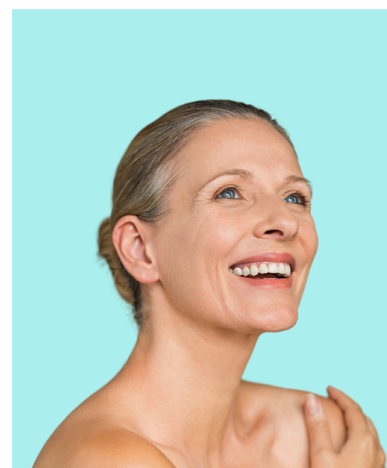
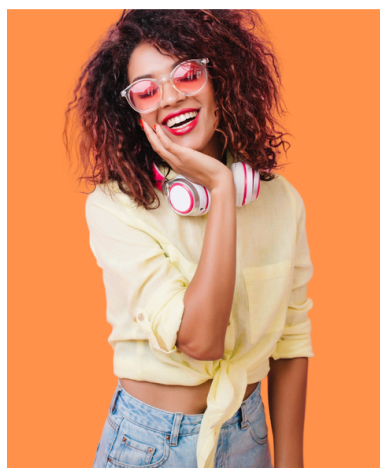
# WOMEN'S LIFESTYLE EXPO

THIS IS WHERE  
WOMEN THRIVE &  
**BRANDS  
SHINE!**

EXHIBIT WITH US

As an exhibitor, **your brand will inspire positive change** in every area of a woman's life - mental and physical wellness, beauty, fashion, finance, personal growth, everyday essentials and more. This is a unique opportunity to shine in front of an audience eager to discover products and services that help them thrive.

**Let's Fuel the Passion, Purpose, and Power of Idaho's Women**



**FEBRUARY 14TH**

EXPO IDAHO || 10AM - 4PM

[WOMENSLIFESTYLEEXPO.COM](http://WOMENSLIFESTYLEEXPO.COM)

CONTACT US TODAY TO  
RESERVE YOUR BOOTH

208.376.0464

[INFO@IBLEVENTSINC.COM](mailto:INFO@IBLEVENTSINC.COM)



# WOMEN'S LIFESTYLE EXPO



## IMPORTANT DATES

**Move-In** - Feb 13 || Friday 10am - 4pm

**Event** - Feb 14 || Saturday 10am - 4pm

**Move-Out** - Feb 14 || Saturday 4pm - 6pm

## BOOTH PRICING

**10x10 Booth** || \$425

**10x20 Booth** || \$750

**10x10 Artisan Booth** || \$195

50% deposit due with booking

Full balance due 45 days prior to show

## BOOTH AMENITIES

**Power** || \$35

**8' Table** || \$30

**Linen** || \$30

**Chairs** || \$7 Each

## LOCATION

Expo Idaho

5610 N Glenwood St

Garden City, ID 83714

## EXHIBITOR BENEFITS

**EXPOSURE** to Hundreds of  
Enthusiastic Women

Create **MORE BUZZ**  
Around Your Brand

**REACH** New Customers

**GENERATE SALES** of Your  
Fabulous Products & Services

**BUILD RELATIONSHIPS** with  
Attendees & Other Exhibitors

## Sponsorships Available!

**CONTACT US  
TODAY TO RESERVE  
YOUR BOOTH!**

208.376.0464 | [INFO@IBLEVENTSINC.COM](mailto:INFO@IBLEVENTSINC.COM)

[WOMENSLIFESTYLEEXPO.COM](http://WOMENSLIFESTYLEEXPO.COM)



# SPONSORSHIP OPPORTUNITIES

*Inspire, Connect, Celebrate Women.*

Engage hundreds of women exploring fashion, wellness, beauty, and lifestyle brands that elevate their everyday.



## PRESENTING SPONSOR



### "Women's Lifestyle Expo Presented by"

\$3,000  
(1 available)

Maximum Visibility  
+ Premium Placement

- 10x20 booth — premier location
- Power, table & chairs included
- Logo on event branding (website, banner, sponsor board, emails)
- Featured in all paid social promotions
- 1 dedicated social media spotlight
- Included in group "thank you" social graphic
- Flyer insert in welcome bags
- Mention in press release
- First right of refusal for next year

### PREMIER SPONSOR

**\$1,750 (3 available)**

- 10x10 corner booth
- Power, table & chairs included
- Logo on banners, sponsor board, website, and emails
- Included in group "thank you" social graphic
- Mention in press release

### SUPPORTING SPONSOR

**\$750**

- 10x10 booth
- Power included
- Logo on event website & sponsor board
- Included in group "thank you" social graphic

### SEMINAR/WORKSHOP SPONSOR

**\$850**

- 10x10 booth
- Verbal mention before presentation
- Logo on event website
- Logo on presentation schedule online and at show

### BAG SPONSOR

**\$625**

- Includes 10x10 booth
- Sponsor to provide 500+ bags & flyer inserts
- Logo on event website





INFO@IBLEVENTSINC.COM



# FLOOR MAP

Loading Lane - Mule Kick Alley

