



**NO VE MB ER**

**14th + 2020**

**9AM - 3PM at Expo Idaho**

**[www.KidsDiscoveryExpo.com](http://www.KidsDiscoveryExpo.com)**

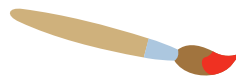
**IBL Events | (208) 376-0464 | [info@ibleventsinc.com](mailto:info@ibleventsinc.com)**

**Don't Miss the 7th Annual**



**Where children and parents**

**EXPLORE + CREATE + DISCOVER**



**The Kid's Discovery Expo**

will provide a day of fun and learning for families. This is your opportunity to educate families about your company, product or service and stand out above your competition.

**NOVEMBER 14, 2020 | EXPO IDAHO | 9AM-3PM**

This Year's Event is in Support of  **IDAHO STEM**, Building Idaho's Future Through Innovative K-12 STEM Learning Opportunities.

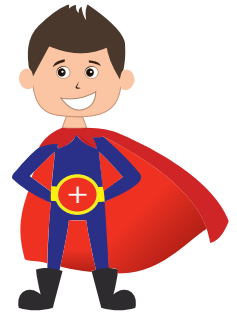
# When we say “hands-on” we really mean it!



Learning through play is what our exhibits are all about. Every vendor will be required to have an hands-on activity in their booth whether it's a game, puzzle or brain teaser.

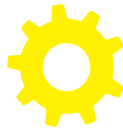
## Have fun with it!

This event targets tots, kids and tweens. If your company targets families, you don't want to miss out on this cost-effective way to generate more business.



## EXHIBITS INCLUDE

After-School Activities  
Sports  
Family Health  
Nutrition  
Tutoring  
Entertainment  
Performing Arts  
Schools  
Toys  
Photographers  
Dentists  
Doctors  
Insurance  
Learning Centers  
Book Stores  
Petting Zoo  
Jump House  
and more!



## Show Details



**November 14, 2020**  
**9am-3pm**

**Expo Idaho**  
5610 Glenwood,  
Boise, ID 83714

<b>Vendor Move In</b>	<b>Vendor Move Out</b>
November 13th 10am-3pm	November 14th 3pm-5pm

### Booth Fees

10x10 \$395  
10x10 Corner \$495

Booths do not include tables or chairs. Booth furnishings are available for rent or vendors may supply their own.

**For Sponsorship Opportunities contact Anna Marie Aldinger**  
**(208) 376-0464 | [info@ibleventsinc.com](mailto:info@ibleventsinc.com)**

# FLOOR MAP

(208) 376-0464 | info@ibleventsinc.com  
[www.KidsDiscoveryExpo.com](http://www.KidsDiscoveryExpo.com)



Vendor  
Load-in

**Wacky  
Kidszone  
20W x 20L**

**Tsunami  
Wave  
18ft x 18ft**

414	318
-----	-----

120	119	118
-----	-----	-----

**Concessions**

514
515
516
517
518

511	418
510	419
509	420
508	421
507	422

413	319
412	320
411	321
410	322
409	323

313	219
312	220
311	221
310	222
309	223
308	224

214	124
213	125
212	126
211	127
210	128
209	129

117
116
115
114
113

4H Activities & Animals

**Stage**

520
521
522
523
524
525

506	424
505	425
504	426
503	427
502	428
501	429

407	325
406	326
405	327
404	328
403	329
402	330
401	331

307	226
306	227
305	228
304	229
303	230
302	231
<b>Welcome Desk</b>	

207	131
206	132
205	133
204	134
203	135
202	136
201	137

110
109
108
107
106
105
104

**Jump  
House  
15x15**

**REST  
ROOMS**

**rock  
climbing wall  
15x30x30**

537	538
-----	-----

○ **Front  
Doors** ○

103	102	101
-----	-----	-----

**Connect 4  
17W x 7L**

**2020 Sponsors**



**kids**  
**DISCOVERY**  
**expo**

**November 14, 2020**  
**9am-3pm | Expo Idaho**



**Reserve Your  
Booth Today!**



**[www.KidsDiscoveryExpo.com](http://www.KidsDiscoveryExpo.com)**

**IBL Events | (208) 376-0464 | [info@ibleventsinc.com](mailto:info@ibleventsinc.com)**